

FLEXIBLE HEATING CABLES AND ELEMENTS FOR BUILDING INDUSTRY, CONSTRUCTION

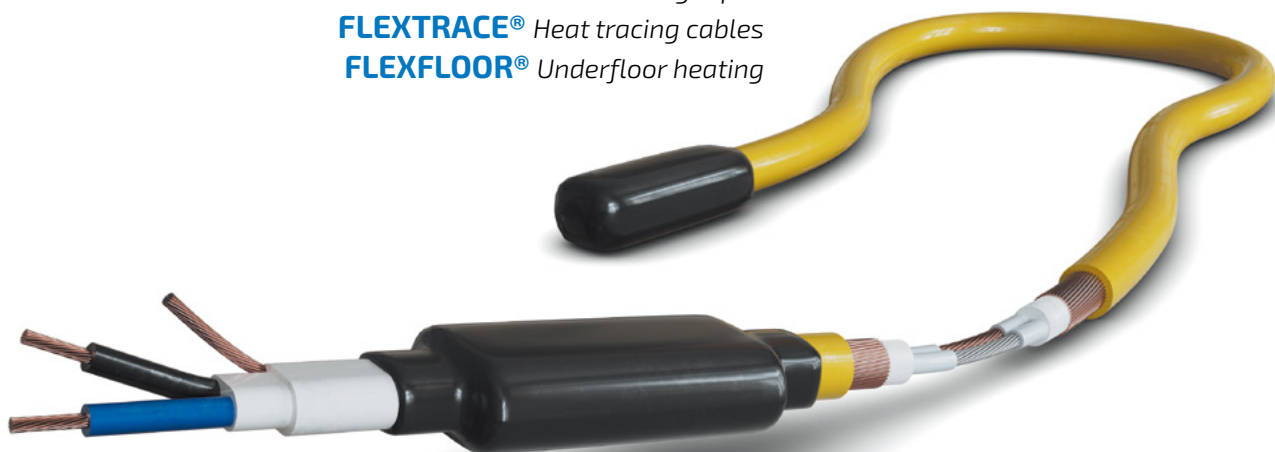
FLEXELEC SOLUTIONS

STOPGEL® Cables for frost-free pipes

FLEXTAPE® Heating tapes

FLEXTRACE® Heat tracing cables

FLEXFLOOR® Underfloor heating



 **flexelec**
GROUPE **omerin**



A subsidiary of the OMERIN group and benefiting from the dynamics of more than 1700 employees, FLEXELEC is a specialist in the design, manufacture of cables and flexible heating elements dedicated to the safety and frost-free maintenance of infrastructures.

The various stakeholders in the building sector and public works have to deal with many situations where temperature maintenance is indispensable. Flexible heating elements are then necessary, during construction sites or throughout the use of buildings.

FLEXELEC is now a key player in the market of heating solutions and cultivates a passion for performance. The company is recognized for the reliability of its products and installations.

Construction and Building

DISCOVER ALL OUR SOLUTIONS AND EXEMPLES OF APPLICATIONS

Freeze protection of pipes with heating cables

Securing the water supply to homes, in garages, car parks, gardens, or on the roofs of buildings whose pipes must be protected against frost in winter. Thermal insulation having made big progress, the supply ducts pass into areas colder and colder. It is therefore necessary not only to insulate them, but also to compensate for heat loss in order to avoid freezing through the installation of heating cables.



FLEXELEC SOLUTIONS to keep pipes frost-free.

STOPGEL® Cables for frost-free pipes. Ideally designed for quick and risk-free implementation, the STOPGEL® is ready to use and meets all the needs of collective or individual dwellings.



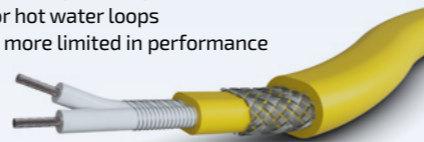
FLEXELEC SOLUTIONS for frost-free holding applications requiring large heat exchange surfaces

FLEXTAPE® Heating tapes
 → RP - RPT - RPI (in PVC) : Flat, for medium powers
 → RS - RST - RSI (in silicone) : Flat, for high powers



FLEXELEC SOLUTIONS for temperature maintenance applications systems or equipment

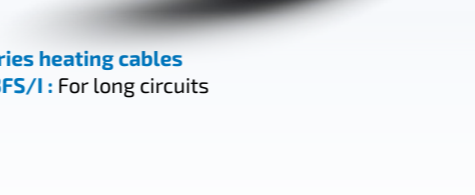
FLEXTRACE® Self-regulating heating cables
 → FSH : Efficient, designed for hot water loops
 → FSO - FSJ : Easy to use but more limited in performance



MEDIUM LENGTHS
FLEXTRACE® Constant power heating cables
 → FTX (halogen-free) : Meets security standards in ERP
 → FTP (PVC) : Flat, improves heat exchange
 → FTSH (silicone) : Flat and particularity

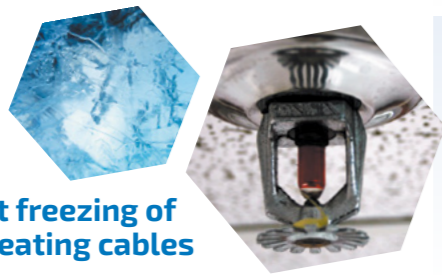


LONG LENGTHS
FLEXTRACE® Series heating cables
 → C1FS/1 - C2FS/1 - C3FS/1 : For long circuits



Protection against freezing of fire systems using heating cables

Provide power to fire hydrants and safety shower supply pipes with heating cables. Whatever the weather conditions, it is essential that emergency services have operational devices, or that automatic systems can be activated in the shortest possible time, with maximum efficiency.



Equipment protection Against freezing in tunnels with heating elements

As for the Channel Tunnel, the flexible heating elements are used to maintain temperature of the fire safety equipment or water supply equipment over very long lengths.



FLEXELEC SOLUTIONS to preserve roofs in winter

FLEXTRACE® Electric heat tracing cables

→ **FTC (constant power)** : Specially designed for roofing application requirements such as strength UV and longevity
 → **FSO - FSJ (self-regulating)** : Very easy to use but limited in performance, circuit length and longevity

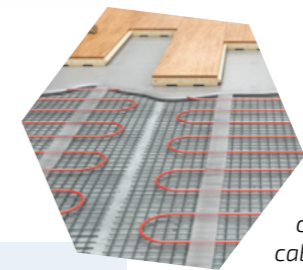


Avoid snow accumulation in gutters thanks to heating cables

Avoid the accumulation of snow and ice in gutters, knots, or roofs by installing heating cables. Without the possibility of using these flows, the water could overflow and damage the facades. Similarly, the eventual fall of ice stalactites formed along the edges can be dangerous for passers-by, and the accumulation of snow on low-slope roofs weakens the structure of the building.

Floor heating with a cable heating

Taking advantage of the accumulating power of concrete slabs to heat rooms or terraces with heating cables installed in the heart of the slab. The heating by the floor is very comfortable because the temperature is uniform throughout the room. Variations and size are much less than by traditional systems.



FLEXELEC SOLUTIONS for the frost-free maintenance of technical soils or asphalt

FLEXFLOOR® Cables and cords for underfloor heating

TECHNICAL SOILS
 → **KY** : Double insulation without braid and sheath, to be connected at the 2 ends
 → **KYCY** : Double insulation with braid and sheath, to be connected to the 2 ends
TECHNICAL SOILS & ASPHALT
 → **KYCYR** : Robust and equipped with its current return, Associated current input and output.



Avoid ice on roads, tracks, gangways or helipads thanks to heating cables

Preventing the risk of accidents on portions of the network urban road with steep gradients, or extend periods of use of automotive test circuits, by proposing snow removal and prevention of icy areas. Direct integration during asphalt laying is possible thanks to heating cables specially developed.



ASPHALT

→ **KYX** : Specifically designed for implementation under asphalt, to be connected to the 2 ends



Secure the landing of helicopters and the passage of emergency medical teams, by positioning active heating cables in case of extreme weather conditions.

FLEXELEC SOLUTIONS to keep bitumen at the right temperature

FLEXTRACE® Electric heat tracing cables

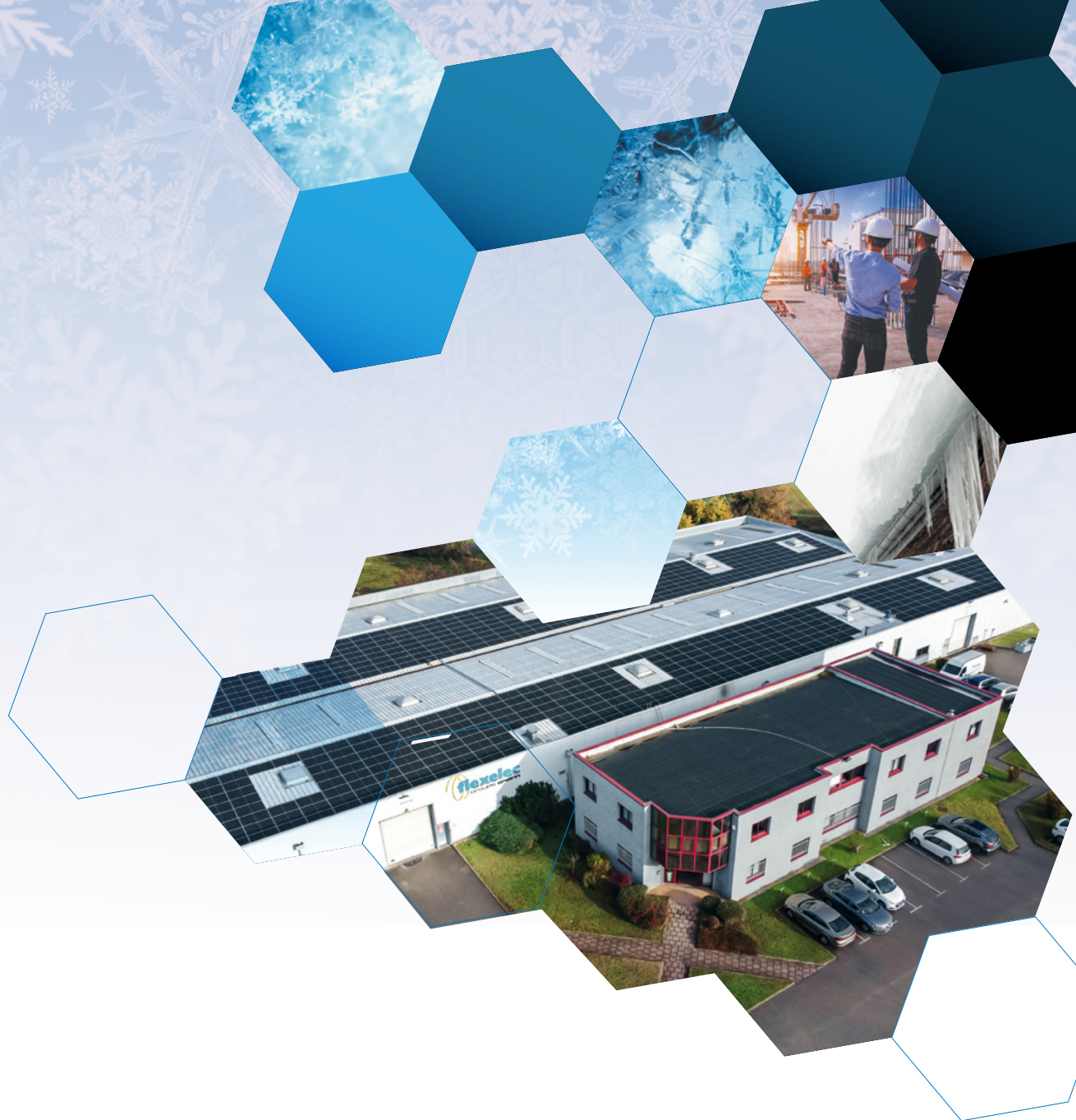
→ **FTTH (constant power, fluoropolymer)** : Flat and particularly efficient, it is available in many versions
 → **FTX (constant power, for high temperature)** : Specifically designed for implementation under the asphalt



Temperature maintenance of bitumens

Fluidify bitumen and admixtures on road and motorway construction sites, by high-temperature tracing of pipes, pumps and hoppers.





10, rue des Frères Lumière – Z.A du bois rond
69720 Saint Bonnet de Mure – France

+33 (0)4 72 48 30 90
flexelec@omerin.com

www.flexelec.com